



Date & Time: February 14, 2009, 9 am – 12 noon
Valentine's Day! Give yourself a gift.

Location: North Seattle Community College, Seattle WA
Bring a woman friend or two with you.

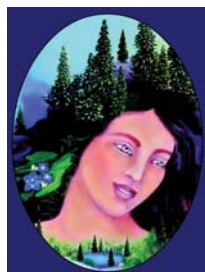


Women of Wisdom Foundation presents:

“The Feminine Face of Money: Living Soulfully & Erotically in a Material World”

Seminar Description:

How might we women companion one another (and the men & children who love us) to live soulfully and erotically in a material world? We'll explore this provocative question via guided dialogue with our money stories, supported by Authentic Movement in a mutually-created, safe and sacred container. This dynamic process also integrates story-telling, dream-tending, and the arts. Participants gain actionable skills, knowledge and resources, empowerment for personal and professional well-being.



Registration: www.womenofwisdom.org/2009conference/Registration.html

Cost: \$35 for WoW members; \$45 for non-members

*17th Annual Women of Wisdom Conference for 2009
Building Bridges for Global Community Through Social Activism*

FFoM™ seminar: www.womenofwisdom.org/2009conference/Saturday.php
(click on link and scroll a couple of paces to find our seminar!)

Seminars Facilitators:



Photo by Joel Sackett

Dianne Juhl, MA & The Feminine Face of Money™ aspires to completely transform how women feel about and interact with money for both personal gain *and the greater good*. Dianne's successful career at Microsoft, depth psychology education, research experience, and social activism gives her an insightful perspective on women and money. Dianne shares the wealth in seminars, writings, and consultations. Visit **FFoM™** at www.femininefaceofmoney.com.

Lynn Fuller, MA, MFCC & Lee Fuller, MA, ADTR are sisters, colleagues as psychotherapists, and teachers/facilitators of Authentic Movement and Witnessing, an embodied discipline which both women have studied and practiced for more than 30 years. They continually open to this elegant form, exploring its healing, creative and contemplative aspects. Lynn and Lee's current focus of inquiry via this form is the neurobiological, energetic, and spiritual implications of embodied presence.